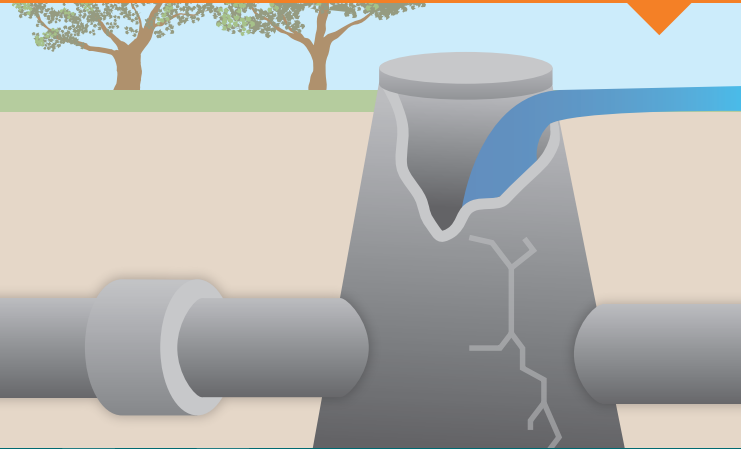


Hidden or damaged sewer access chambers

Sewer access chambers are important access points to the sewerage system and should be kept clear. Poorly fitting, cracked or damaged sewer access chambers can let water into the sewerage system. If you notice any damage to sewer access chambers please call Essential Water on **13 23 91** to report the problem.



For more information

If you would like more information on sewerage system maintenance or how to correctly divert stormwater, please call Essential Water on **13 23 91** visit **essentialwater.com.au** or alternatively contact a licensed plumber.

We're here
to help.

Essential Service Centre

Broken Hill
160 Beryl Street

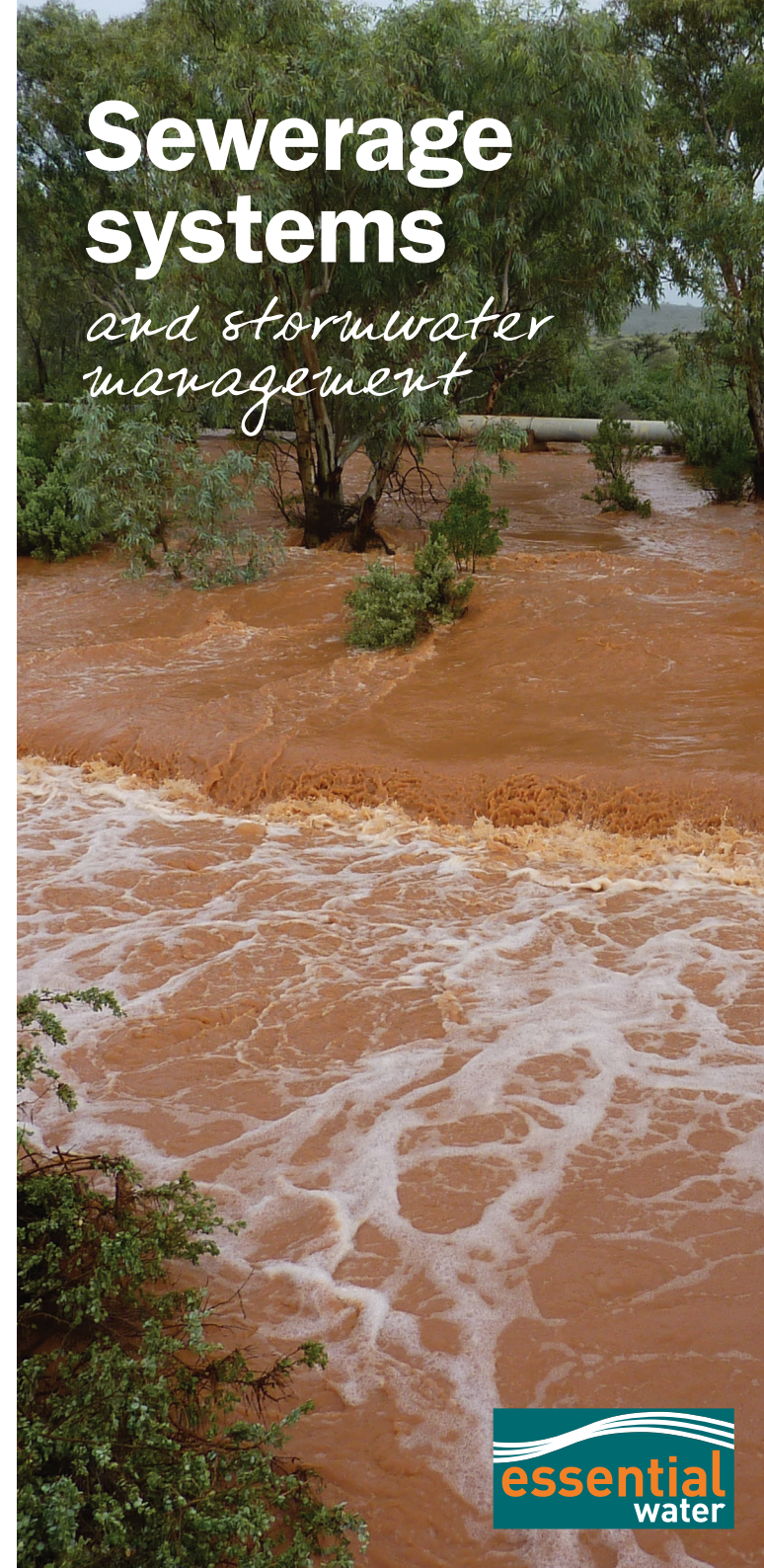
For general enquiries call **13 23 91**
essentialwater.com.au

Essential Energy trading as Essential Water



Sewerage systems

*and stormwater
management*



Essential Water sewerage systems and stormwater management

Essential Water sewerage systems are designed to transport sewage (wastewater) from residential, commercial and industrial areas.

These systems should not be used for diverting stormwater. Stormwater should be directed away from entering the sewerage system by running downpipes directly into roadside guttering, identified stormwater drains, gardens, lawns or rain water tanks.

Who is responsible for stormwater management?

Property owners are responsible for maintaining the pipes and downpipes on their properties so stormwater does not enter the sewerage system. When stormwater enters the sewerage system it creates additional pressure on the system. This pressure can cause sewage to back up the sewerage system and force open sewer access chambers, which could result in a sewage overflow in backyards as well as overloading the sewage treatment plant.

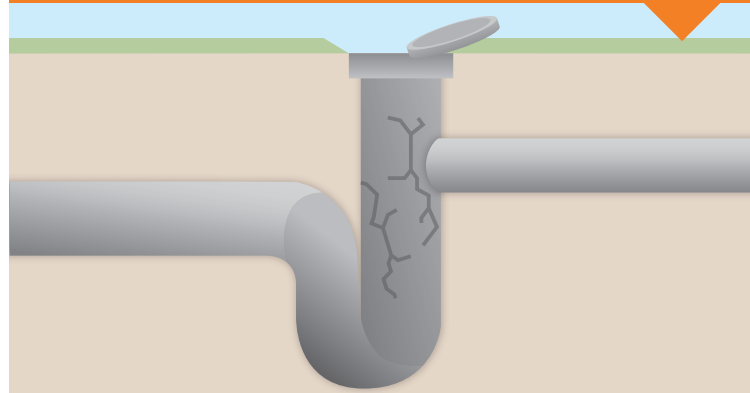
Sewage overflow is costly to clean up and could cause considerable environmental harm. Even if an overflow doesn't occur, there are additional costs associated with having the stormwater pumped to Essential Water's sewage treatment plants for processing.

What can I do?

This brochure provides some advice on common sewerage system problems, what you can do to address these issues and how to manage stormwater.

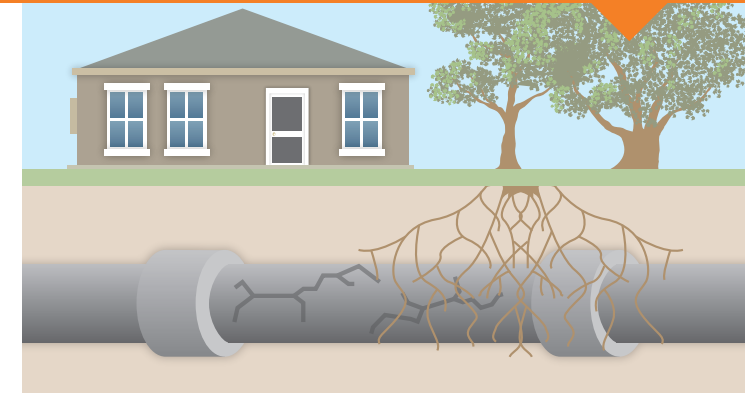
What should I do about buried or damaged inspection points?

Most properties have an opening into the sewer pipe, known as an inspection point. It is generally a vertical pipe from the underground sewer line to the surface with a round plastic or metal cover approximately 150mm in diameter. Broken pipes or damaged covers can let stormwater into the sewer. Make sure all broken pipes or damaged covers are repaired or replaced as soon as possible. Contact a licensed plumber to undertake any maintenance or repairs.



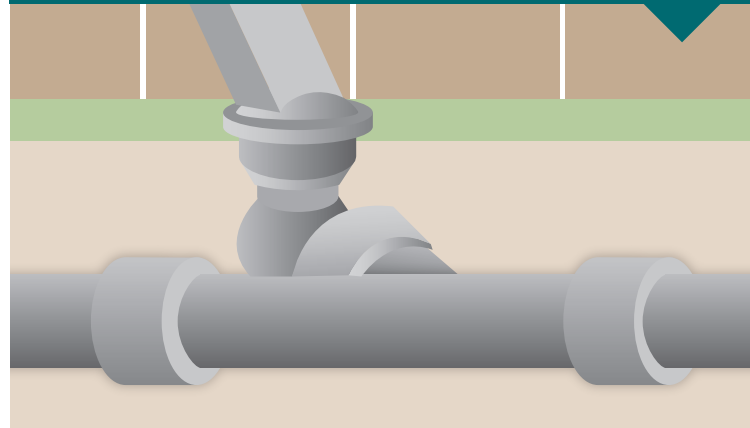
What if tree roots enter cracks in pipes?

Tree roots can enter the smallest cracks in pipes, where they will grow and eventually cause a blockage. This can then result in storm water entering the sewerage system. If tree roots on your property have entered pipes, the tree roots need to be removed and cracked pipes repaired by a licensed plumber. When planting trees make sure they are not planted near your sewer pipes.



Where should I divert stormwater?

It is illegal to connect stormwater pipes and drains to the sewerage system as this causes excess water to enter the system and can result in sewage overflows. Disconnect all downpipes from the sewerage system and divert stormwater directly into roadside guttering, identified stormwater drains, gardens, lawns or rain water tanks. Property owners should also ensure that any diverted stormwater does not cause localised flooding.



How can I identify broken pipes?

Grass flourishing above your sewer pipes, odours and ground movement are signs that pipes below ground may be broken. This can result in stormwater entering the sewerage system, as well as allowing sewage to soak into the soil. Broken pipes need to be repaired or replaced by a licensed plumber.

